



For your safety

Please read this instruction manual before you use the Hand Pallet Truck!

Contents: Part List and Instruction

Model .: **XTN/XTN-S (002)**

Please keep these instructions for future reference.

Vietmachine Producing and Trading Co., Ltd

Plot VII.1, Khai Son Industrial Park, Thanh Khuong, Thuan Thanh, Bac Ninh, Viet Nam

Tel: + 84 24 36431821

Fax: + 84 24 36443076

Hand Pallet Truck With Hand Brake

Instructions

Table of Contents

Safety rules and Instruction2
Handle assembling 2 – 4
Setting of Realse Valve 4 – 5
How to work with Hand Pallet Truck 6 – 7
Service and Guarantee..... 7 – 8
Fault diagnosis, Examination, Disposal 10
Assembling Break..... 11
Part list 12
Part list drawing 13

Introduction & Precautions

Safety warning and Instruction

1.1 Introduction

Thank you for using this pallet truck. This pallet truck is made of high quality steel and is designed to give you a durable, reliable and easy to use product. For your safety and correct operation, please carefully read this instruction manual before using this pallet truck.



1.2 Introduction and precautions

All of the information reported herein is based on data available at the moment of printing. We reserve the right to modify our own products at any moment without notice and incurring in any sanction. So, it is suggested to always verify possible updates.



1.3 Technical Specification

Model:	XTN/XTN-S (002)
Rated Capacity:	2000/2500/3000 kg
Fork width:	450/540/680 mm
Fork Length	600/800/950/1000/1150/1500/2000/2500
Minimum height	80 mm
Maximum lifting height	200 mm
Fork wheel	PU/NYLON
Steering wheel	PU

Assembling the Handle

1.4 Tools you need

Hammer 180g , medium size screw driver. 3 mm Punch

1.5 Parts

Handle(45), Handle axis (46), 2x spring pin (23).

These parts are supplied in a plastic bag, which is attached to the handle

Note: The number of the handle and pump should be the same

2 Assembling the Handle



Pict 1.

- 2.1 Pull down the lever to the Lifting position. (lifting)
- 2.2 Insert the Handle onto the pump piston (Part No. 1). Then use a hammer to insert the axle with hole (Part No. 46) into the hydraulic Pump and handle from the right to the left. (See Pict 1)
Pass the adjusting nut (Part No. 59), adjusting bolt (Part No. 58) and chain (Part No. 60) assembly through the hole of the axle (part No. 46) with your hand.
- 2.3 Use the hammer to tap another spring pin (Part No. 23) into the axle with the hole (Part No. 46). Using a 3mm Punch to finish
- 2.4 Using screw driver to lift up the Cam (17) and put the adjusting nut into the Cam slot, check the correct position of the chain. (see Pitc 2, 1).



Pict 2

- 2.5 Press the handle down and remove the Pump locker (Pict 1,Nr.3)
- 2.6 On the cable of brake system, remove the M5 nut (Part No. 118), spring $\text{Ø}10 \times 100$ (Part No. 116). Put the brake cable thread end into the hole of Brake Axis 1 (Part No 90).



Assemble the spring (Part No. 116) back to brake cable then put the thread end of the cable into the hole of Brake axis 2, then screw in the M5 nut (Part No. 118) to fix the position.



Please make sure to adjust the brake system by checking with brake lever (Part No. 109) before closely fixed the brake cable by adjusting the M5 nut (Part No. 118).

2.7 Now the Handle is already assembled to the Hand Pallet Truck.



3 To adjust the release device

On the handle of this hand pallet truck, you can find the lever, which operates in three positions:

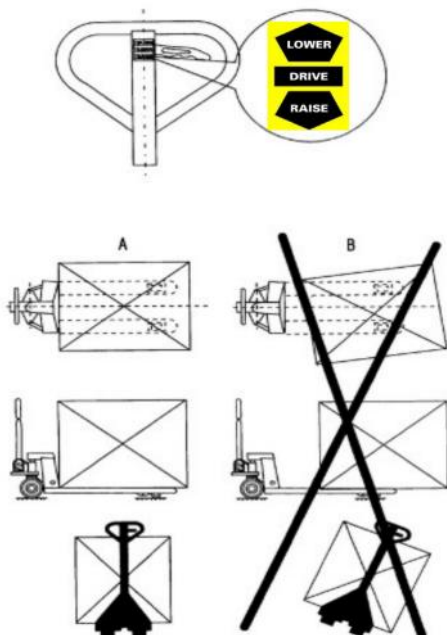
Lower = Lowering the fork LOWER-Position
Drive = Drive the truck Drive-Position
Raise..... = Lift the fork..... Raise-Position

If however they have been changed, you can adjust according to the following steps

- 3.1** If the forks elevate while pumping in the DRIVE position, turn the adjusting nut (Part No. 59) on the adjusting bolt (Part No. 58) clockwise until pumping action does not raise the forks and the DRIVE position properly.
- 3.2** If the forks descend while pumping in the DRIVE position, turn the nut (Part No. 59) counter-clockwise until the forks do not lower.
- 3.3** If the forks do not descend when the Lever is in the LOWER position, turn the nut (Part No. 59) clockwise until raising the Lever (Part No. 51) lowers the forks. Then check the DRIVE position according to item 3.1 and 3.2 to be sure that the nut (Part No. 59) is in the proper position.
- 3.4** If the forks do not elevate while pumping in RAISE position, turn the nut (Part No. 59) counter-clockwise until the forks elevate while pumping in the RAISE position. Then check the LOWER and DRIVE positions according to item 3.1, 3.2 and 3.3 .



4.0 Handling



TO RAISE:

Insert the forks into the pallet. Move the lever (Part No.) into RAISE position. With an up/down motion of the handle, pump the pallet truck to desired height

Pict 3

NEUTRAL

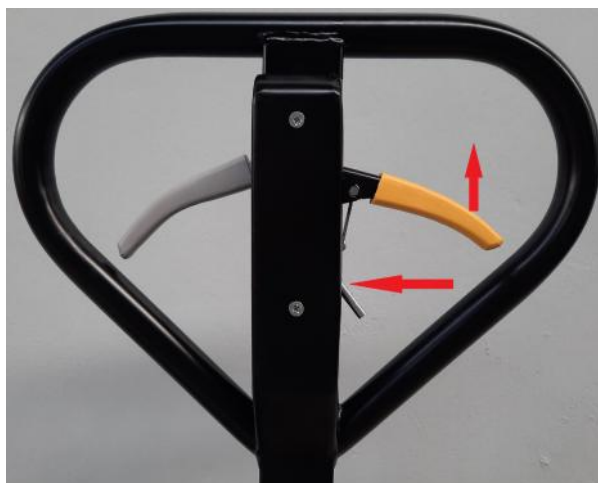
When raising the pallet truck is finished, move the lever (Part No.) to Neutral position and move the pallet truck to your desired position

TO LOWER

Pull and hold the lever (part No.) to Lower position until the pallet truck reaches the desired height.

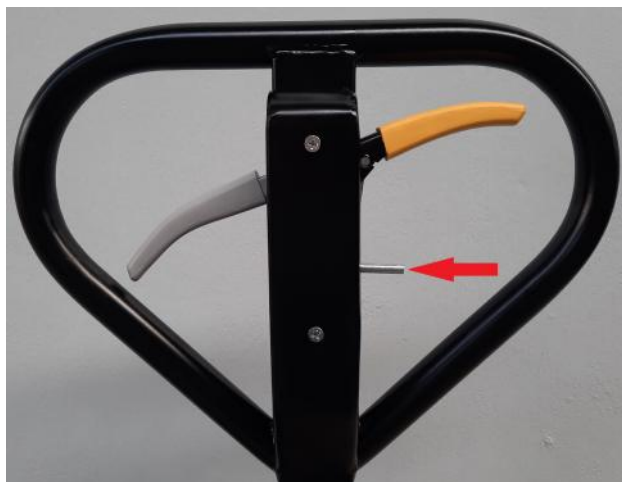
TO BRAKE

When the Brake Trigger (Part No. 105) is at the low position, the pallet truck can be moved easily and when the operator needs to brake, pull the brake lever (part No. 108) upright to slow or stop the moving truck.



Pict 4

To park the pallet truck, operation needs to pull the brake lever (par No. 108) to the highest position, hold it and set the brake trigger (part No. 105) to the high position (see pict 5).



Pict 5

To release brake, pull the brake lever to the highest position, set the brake trigger (Part No. 105) to low position (pict 4). The pallet truck is ready for normal operation

4.1 Driving and Steering the truck with Handle

The handle is adjusted directly to the steering wheels. The steering wheels will follow the position of the handle.

4.2 How to take the load

Drive the truck slowly in front of the pallet. Then, drive the fork of the truck under the pallet up to end of the fork length. (Pict 3.A).

Lift the load by pumping the handle at Raise position. The load must be on the center of the hand pallet truck. Otherwise, the hand pallet truck can be overturned



4.3 Drive with load

It is not necessary to pump the pallet truck to the highest position to drive. You must pay attention to the space between the bottom of the pallet and always keep the pallet clear of the floor. You should carefully drive the hand pallet truck at a stable speed paying due care and attention to the environment around you.

4.4 Lowering the Load

Lift the Lever to the Lower position, ensuring a free space behind. Then the truck can be pulled out of the pallet.

4.5 How to use the hand pallet truck on the truck

Only move the pallet truck slowly, at all times be careful that the hand pallet truck can not fall down from the truck or the user will not be in the middle between the hand pallet truck and other loads. If the pallet truck is not used, it must be firmly fixed on the truck when the truck is moving.

5.0 Service and warranty

5.1 Oil

The Hydraulic oil in the pallet truck is used for work condition of 6°C to 45°C only. If the pallet truck is used in a temperature under 6°C, it must be used with other Hydraulic oil with viscosity under 10.

Please check the oil level every six months. The hydraulic oil volume in the pump is 300 ml.

Used oil must be disposed of according to the latest regulations.



5.2 To remove the air

The air may come into the hydraulic oil because of transportation or pump in upset position. It can cause that the forks do not elevate while pumping the RAISE position. The air can be removed in the following way: Let the Lever (Part No. 51) on the LOWER position, then move the Handle up and down several times.

5.3 Daily check and Maintenance

Daily check of the pallet truck can limit wear as much as possible. Special attention should be paid to the wheels, the axles, as thread, rags, etc. It may block the wheels. The forks should be unloaded and lowered in the lowest position when the job is over.

5.4 Lubrication

All bearings and shafts are provided with long-life grease at the factory. You only need provide long-life grease at monthly intervals or after each time the truck is cleaned thoroughly to the lubrication points.

6.0 Guide to safety operation

6.1 Operator should read all warning signs and instruction here and on the pallet truck before using this truck



6.2 Do not operate a hand pallet truck unless you are familiar with it and have been trained or authorized to do so.

6.3 Do not operate a hand pallet truck unless you have checked its condition. Give special attention to the wheels (part No. 26, Part No. 71), the Handle unit, the fork unit, the cam (Part No. 17), etc.

6.4 Do not use the pallet truck on a uneven or slopping ground. Do not use the pallet truck on gradients.

6.5 The pallet truck is not allowed to be used in insufficiently illuminated areas. Minimum illumination must be at least 50 lux.

6.6 If the pallet truck is moving, it is not allowed to turn the handle into the right angle to stop the pallet truck.

6.7 It is forbidden to use hand pallet truck for people transportation.

- 6.8 It is not allowed to use the pallet truck as a jack.
- 6.9 It is not allowed to use the fork of the pallet truck as a lever to lift loads.
- 6.10 Do not load like the picture 3.B.
- 6.11 Do not load over maximum capacity.
- 6.12 It is not allowed to use the pallet truck in risky conditions.
- 6.13 It is not allowed to use the pallet truck in direct contact with food.
- 6.14 It is not allowed to use the pallet truck in explosive atmosphere.
- 6.15 Operator must wear safety boots and gloves.
- 6.16 Whilst the goods are being transported all none operational staff should be at a minimum distance of 600mm.
- 6.17 At service work, it is not allowed to scatter parts.
- 6.18 Under any special conditions or environments, the operator should carry out all relevant risk assessments and method statements before commencing work with the pallet truck.
- 6.19 It is forbidden to use the pallet truck if there is a risk that the pallet truck and load may fall down, for example, from unsecured ramps.



7.0 Guarantee

This hand pallet truck is guaranteed within 24 months for private users and 12 months for company users after the date of buying. The guarantee is only given if the hand pallet truck is used and serviced as instructed in this Manual. There is no guarantee for consumable parts.

8.0 TROUBLE SHOOTING

No.	Trouble	Clause	Fixing Methods
1	The forks cannot be up at the max height	The hydraulic oil is not enough	Pour in the oil
2	The fork cannot be lifted up	<ul style="list-style-type: none"> - Without hydraulic oil - The oil has impurities - The nut (Part No. 59) is too high, keep the pumping valve open. - The air comes into the hydraulic oil. 	<ul style="list-style-type: none"> - Fill in the oil - Change the oil - Adjust the nut (Part No.59) (see item 3.4) - Bannish the air (see item 5.2)
3	The forks cannot be descended	<ul style="list-style-type: none"> -The piston rod (Part No. 9) or pump body (Part No. 15) is deformed resulting from partial loading slanting to one side or over loading. - The fork was kept in the high position for long time with piston rod bared to arise in rusting and jamming of the rod. - Adjusting the nut (Part No. 59) is not the correct position. 	<ul style="list-style-type: none"> - Replace the piston rod (Part No. 9) or the pump body (Part No. 15) - Keep the fork in the lowest position if not using, and pay more attention to lubricate the rod. - Adjust the nut (Part No.59) (see the item 3.3)
4	Leaks	<ul style="list-style-type: none"> - Sealing parts worn or damaged. - Some parts creaks or worn into small 	<ul style="list-style-type: none"> - Replace with the new one. - Replace with the new one.
5	The fork descends without the release valve worked.	<ul style="list-style-type: none"> - The impurities in the oil cause the release valve to be unable to close tight. - Some parts of the hydraulic system is cracked or bored. - The air comes into the hydraulic oil. - Sealing parts worn or damaged. - The adjusting nut (Part No.59) is not the the correct position. 	<ul style="list-style-type: none"> - Replace with the new oil. - Inspect and replace the waste parts. - Bannish the air (See item 5.2) - Replace with the new one. - Adjust the nut (Part No.59) (see the item 3.3)

Note: Do not attempt to repair the pallet truck unless you are trained or authorized to do so.

8.1 Inspection

The hand pallet truck must be inspected by authorized person minimum one time per year. The result of checking must be filled in the report.

VBG 36, § 37

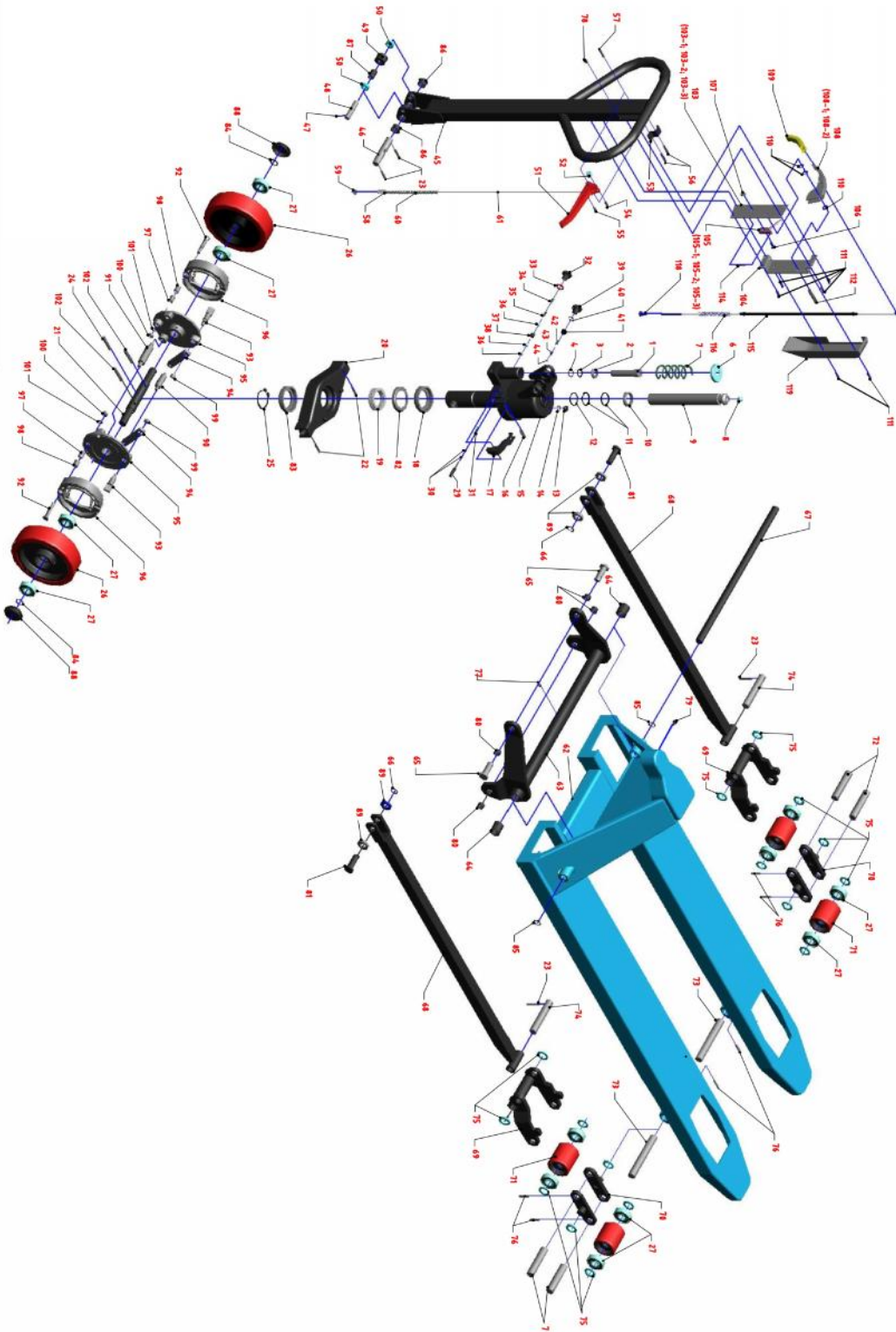
8.2 Disposal

After using, the pallet truck should be disposed corresponding to the law regulations. All parts should be brought for recycling.

Part List
XTN-S/XTN (002)

Part No	Description	Quant.	Part No	Description	Quant.
1	Plunger Piston	1	56	Spring Pin Ø4 x 30	2
2	Dust Seal Ø18 - Ø26 - 4/6	1	57	Spring Pin Ø6 x 30	1
3	O-ring Ø17.8 x 2.4	1	58	Anchor Bolt	1
4	Back-up ring Ø18 x Ø22 x 1.25	1	59	Nut M6	1
5	E-ring Ø20	1	60	Chain	1
6	Spring Cap	1	61	Release Rod	1
7	Spring	1	62	Fork	1
8	Steel Ball Ø14	1	63	Lifting Yoke	1
9	Ram Piston	1	64	Plastic Bushing 20 x 27 x 30	2
10	Dust Seal Ø32 - Ø40 - 5/6.5	1	66	E-ring Ø20	2
11	O-ring Ø30.8 x 3.6	2	67	Lifting Yoke Axis 540	1
12	Back-up ring Ø32 x Ø38 x 1.5	1	68	Rod 1150	2
13	Oil Plug	1	69	Arm	2
14	O-ring Ø6 x 1.8	1	70	Steel Plate	4
15	Pump Body BM - N32	1	71	Load Wheel	4
16	Spring Pin Ø8 x 25	1	72	Load Wheel Axis	4
17	Cam	1	73	Arm Pin	2
18	Bearing Base	1	74	Rod Pin	2
19	Bearing 51109	1	75	Washer	4
20	Table	1	76	Spring Pin Ø5 x 40	2
21	Steering Wheel Axis	1	77	Grease Nipple	1
22	Spring Pin Ø6 x 35	2	78	Rubber	1
23	Spring Pin Ø5 x 30	8	79	Screw M6 x 10	1
24	Spring Pin Ø8 x 45	1	80	Bushing 22 x 20 x 14 x 1	2
25	Snap Ring Ø45	1	81	Bushing 18 x 16 x 16	4
26	Steering Wheel Ø180 x 50	2	83	inner Circlip Ø25	2
27	Bearing 6204	12	86	Wheel cap	2
28	Snap ring Ø20	2	90	Brake axis 1	1
29	Release Nozzle	1	91	Brake axis 2	1
30	O-ring Ø4 x 2	2	92	Brake axis 3	2
31	Spring	1	93	Brake axis 4	2
32	Release Plug	1	94	Brake shoe arm	2
33	Copper Washer Ø14.5 x Ø22 x 1.5	1	95	Brake disk	2
34	Spring	1	96	Brake Shoe	2
35	Spring	1	97	Tube 1	2
36	Steel Ball Ø6	2	98	Tube 2	2
37	Valve Housing	1	99	Locknut M8	2
38	Steel Ball Ø9	1	100	Nut M8	5
39	Relief Screw	1	101	Washer 8	2
40	O-ring Ø11.2 x 2.65	1	102	Spring pin Ø6x 45	2
41	Relief Screw	1	103	Brake Cover 1	1
42	Spring	1	104	Brake Cover 2	1
43	Ball housing	1	105	Brake Trigger	1

44	Steel Ball Ø5	1	106	Screw M6 x 15	1
45	Handle BTN - 2500	1	107	Nut M6	1
46	Hanle Axis	1	108	Brake Lever	1
47	Spring Pin Ø3 x 25	1	109	Lever Cover	1
48	Roller Pin	1	110	Washer 8	3
49	Roller	1	111	Screw M5 x 15	6
50	Bushing	2	112	Spring Pin Ø6x25	1
51	Lever	1	114	Spring Ø4x15	1
52	Plastic Roller	1	115	Brake Cable	1
53	Spring Plate	1	116	Spring Ø10x100	1
54	Spring Pin Ø4 x 16	1	118	Nut M5	1
55	Spring Pin Ø4 x 16	1	119	Outer cover	1



ICHIMENS®

© 2020 Vietmachine Producing and Trading Co. LTD / Vietnam