

OPERATING INSTRUCTIONS

Parts List



Hand Pallet Truck

Note: Owner and operator MUST read and understand this operating instructions before use this pallet truck.

Thank you for choosing our pallet truck. For your safety and correct operation, please carefully read the manual before use.

NOTE: All of the information reported herein is based on data available at the time of printing. The factory reserves the right to modify its own products at any time without notice or incurring in any sanction. Please verify with the factory for possible updates.

1. GENERAL SPECIFICATIONS

Capacity (kg)	2000	2000	2500	2500	3000	3000
Max. Fork Height (mm)	200(or190)					
Min. Fork Height (mm)	85(or75)					
Fork Length (mm)	1150	1220	1150	1220	1150	1220
Width Overall Forks (mm)	550	685	550	685	550	685
Individual Fork Width (mm)	160					
Load Wheel Diameter (mm)	Ø 80x70(or Ø 74x70) Nylon, Polyurethane					
Steering Wheel Diameter (mm)	Ø 200(or Ø 180) Nylon, Polyurethane, Rubber					

Special fork length are available 800, 900, 950, 1000, 1500, 2000mm.

Materials and specification are subject to change without notice.

2. TO ATTACH HANDLE TO PUMP UNIT

2.1 Remove 3 bolts (D611) from the handle bracket (347).

2.2 Set handle (D610A, D610B or D610AS) on the bracket (347), notice to allow the chain (D612) and the adjusting bolts (D614) assembly to pass through the hole in the center of the bracket (347) and shaft (346).

2.3 Insert the 3 bolts (D611) through the handle into the bracket (347), then tighten them securely.

2.4 Raise the lever plat (325) and insert the adjusting bolt (D614) into the front slot, keeping the adjusting nut (D615) on the under side of the lever plat (325).

3. TO ADJUST RELEASE DEVICE

On the draw-bar of this pallet truck, you can find the control handle (D608 or D608S) which can be regulated in three positions :

Raise - handle down

Drive position - handle in center position

Lower - handle up, the lever moves back the drive position when released.

If however they have been changed, you can adjust according to following step:

3.1 If the forks elevate while pumping in the **DRIVE** position, turn the adjusting nut (D615) on the adjusting bolt (D614) or adjusting screw (324) clockwise until pumping action does not raise the forks and the **DRIVE** position functions properly.

3.2 If the forks descend while pumping in the **DRIVE** position, turn the nut (D615) or adjusting screw (324) counter-clockwise until the forks do not lower.

3.3 If the forks do not descent when the control handle (D608 or D608S) is in the **LOWER** position, turn the nut (D615) or adjusting screw(324) clockwise until raising the control handle(D608 or D608S) lowers the forks. Then check the **DRIVE** position according to item 3.1 and 3.2 to be sure

the nut (D615) or adjusting screw (324) is in the proper position.

3.4 If the forks do not elevate while pumping in the **RAISE** position, turn the nut (D615) or adjusting screw(324) counter-clockwise until the forks elevate while pumping in the **RAISE** position. Then check the **LOWER** and **DRIVE** position according to item 3.1, 3.2 and 3.3.

4. MAINTENANCE

Your pallet truck is largely maintenance-free.

4.1 OIL

Please check the oil level every six months. The oil capacity is about 0.3lt. Restore the fluid level in the rubber reservoir to 5mm below the top, this must be with the forks in the lowered position.

Use the hydraulic type oil according to temperature scale below.

Temperature	Oil
-20°C~+40°C	L-HV46 Hydraulic oil

4.2 HOW TO EXPEL AIR FROM THE PUMP UNIT

The air may come into the hydraulic oil because of transportation or pump in upset position. It can cause that the forks do not elevate while pumping in the **RAISE** position. The air can be banished in the following way: let the control handle (D608 or D608S) on the **LOWER** position, then move the handle (D610A, D610B or D610AS) up and down for several times.

4.3 DAILY CHECK AND MAINTENANCE

Daily check of the pallet truck can limit wear as much as possible. Special attention should be paid to the wheels, the axles, as thread, rags, etc. It may block the wheels. The forks should be unloaded and lowered in the lowest position when the job is over.

4.4 LUBRICATION

Use motor oil or grease to lubricate all moveable parts.

5. GUIDE TO SAFETY OPERATION

For safe operation of the Hand Pallet Truck, please read all warning signs and instructions here and on the pallet truck prior to use.

- 5.1 Do not operate the pallet truck unless you are familiar with it and have been trained or authorised to do so.
- 5.2 Do not operate the truck unless you have been trained and authorised. Give special attention to the wheels, the handle assembly, the forks, and the lower control.
- 5.3 Do not use the truck on sloping ground.
- 5.4 Never place any part of your body in the lifting mechanism or under the forks or load. Do not carry passengers.
- 5.5 We advise that operators should wear gloves and safety shoes.
- 5.6 Do not handle unstable or loosely stacked loads.
- 5.7 Do not overload the truck.
- 5.8 Always place loads centrally across the forks and not at the end of the forks (See Fig. 2).
- 5.9 The capacity of the truck assumes an evenly distributed load with the centre of the load being at the halfway point of the length of the forks.

5.10 Make sure that length of the forks matches the length of the pallet.

5.11 Lower the forks to lowest height when the truck is not being used.

5.12 In other specific conditions the operators should take extra care in operating the truck.

6. TROUBLES SHOOTING

No	Trouble	CAUSE	ACTION
1	The forks can not be up the max. height.	- The hydraulic oil is not enough.	- Pour in the oil.
2	The forks can not be lifted up.	- Without hydraulic oil. - The oil has impurities. - The nut (D615) is too high or the screw (324) is too close, keep the pumping valve open. - Air come into the hydraulic oil.	- Fill in the oil. - Change the oil. - Adjust the nut (D615) or the screw (324) .(see item 3.4) - Banish the air.(see item 4.2)
3	The forks can not be descended.	- The piston rod (343) or pump body is deformed resulting from partial loading slanting to one side or over-loading. - The fork was kept in the high position for long time with piston rod bared to arise in rusting and jamming of the rod. - The adjusting nut (D615) or the screw (324) is not in the correct position.	- Replace the piston rod (343) or pump body. - Keeping the fork in the lowest position if not using, and pay more attention to lubricate the rod. - Adjust the nut (D615) or the screw (324). (see item 3.3)
4	Leaks	- Sealing parts worn or damaged. - Some part cracked or worn into small.	- Replace with the new one. - Replace with the new one.
5	The fork descends without the release valve worked.	- The impurities in the oil cause the release valve to be unable to close tight. - Some parts of hydraulic system is cracked or bored. - Air come into the oil. - Sealing parts worn or damaged. - The adjusting nut (D615) or the screw (324) is not in the correct position.	- Replace with new oil. - Inspect and replace the waste parts. - Banish the air. (See item 4.2) - Replace with the new one. - Adjusting the nut (D615) or the screw (324). (See item 3.2)

***NOTE: DO NOT ATTEMPT TO REPAIR THE PALLET TRUCK UNLESS YOU ARE TRAINED AND AUTHORIZED TO DO SO.**

Fig.1

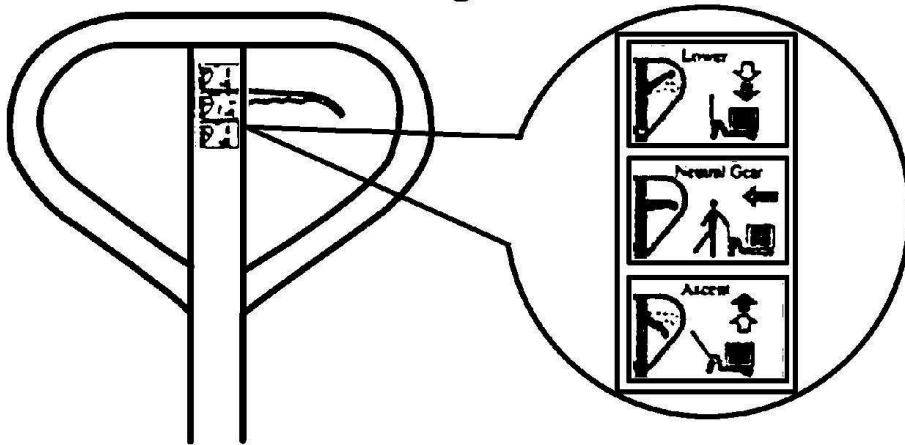
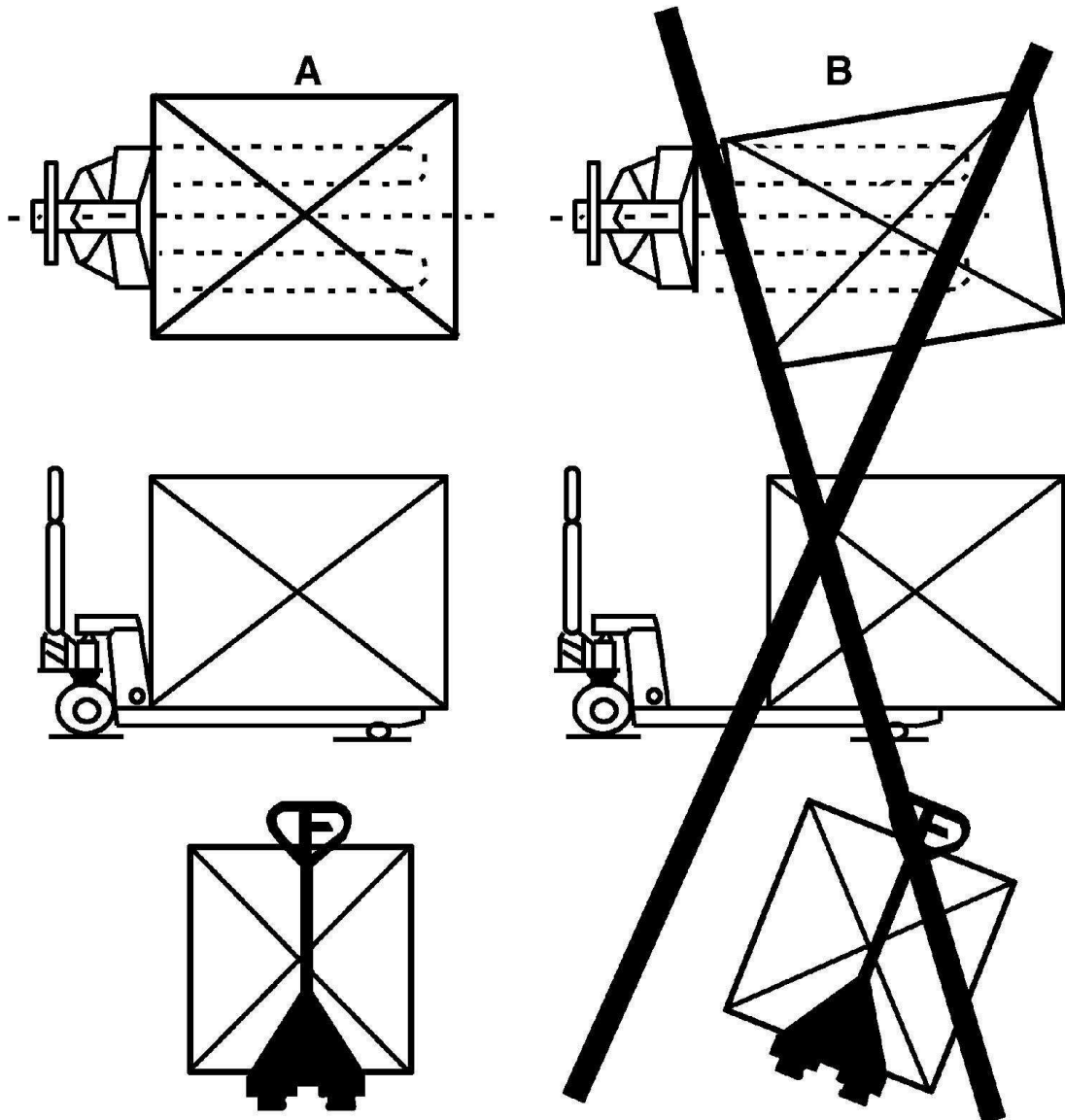
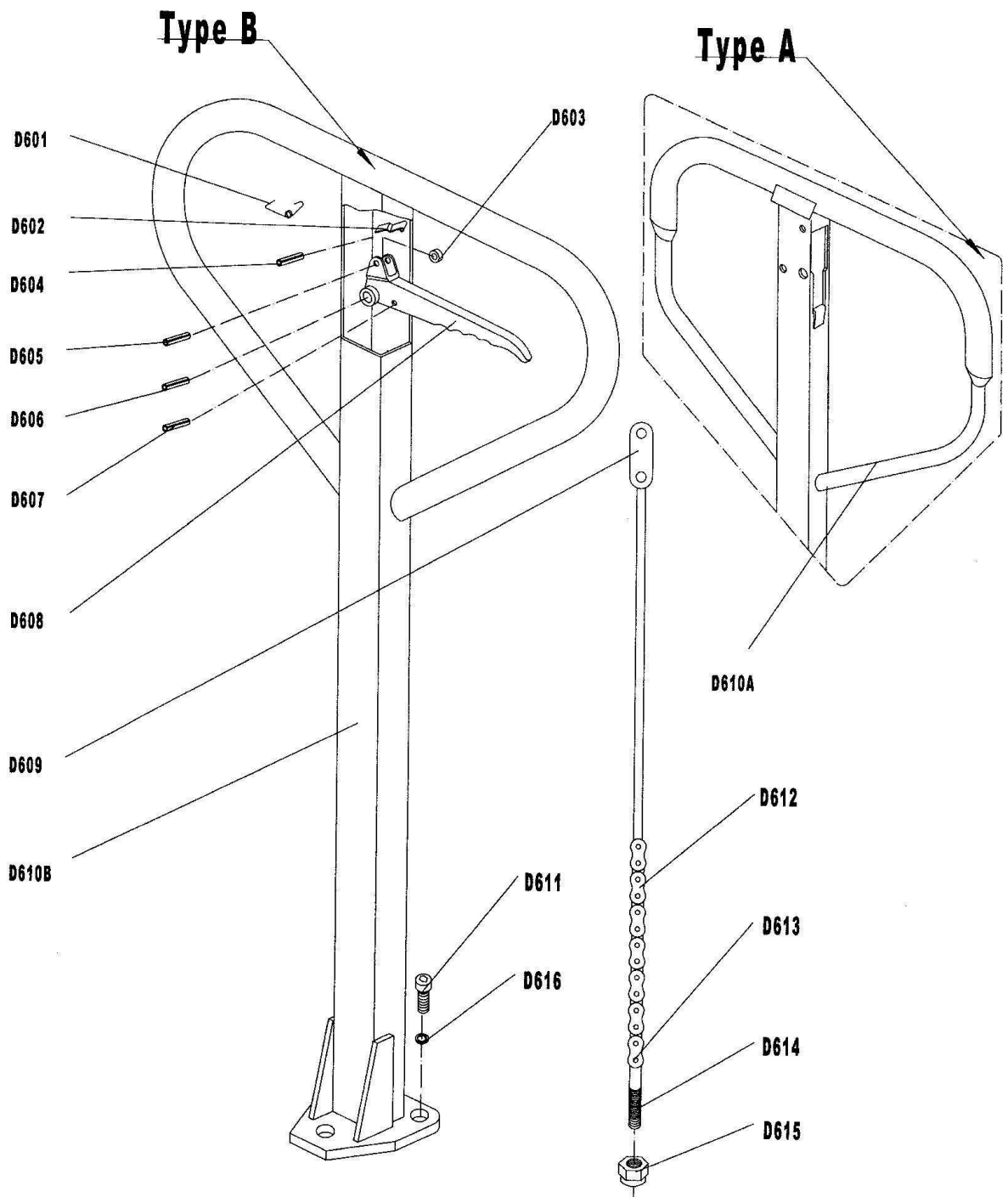


Fig.2

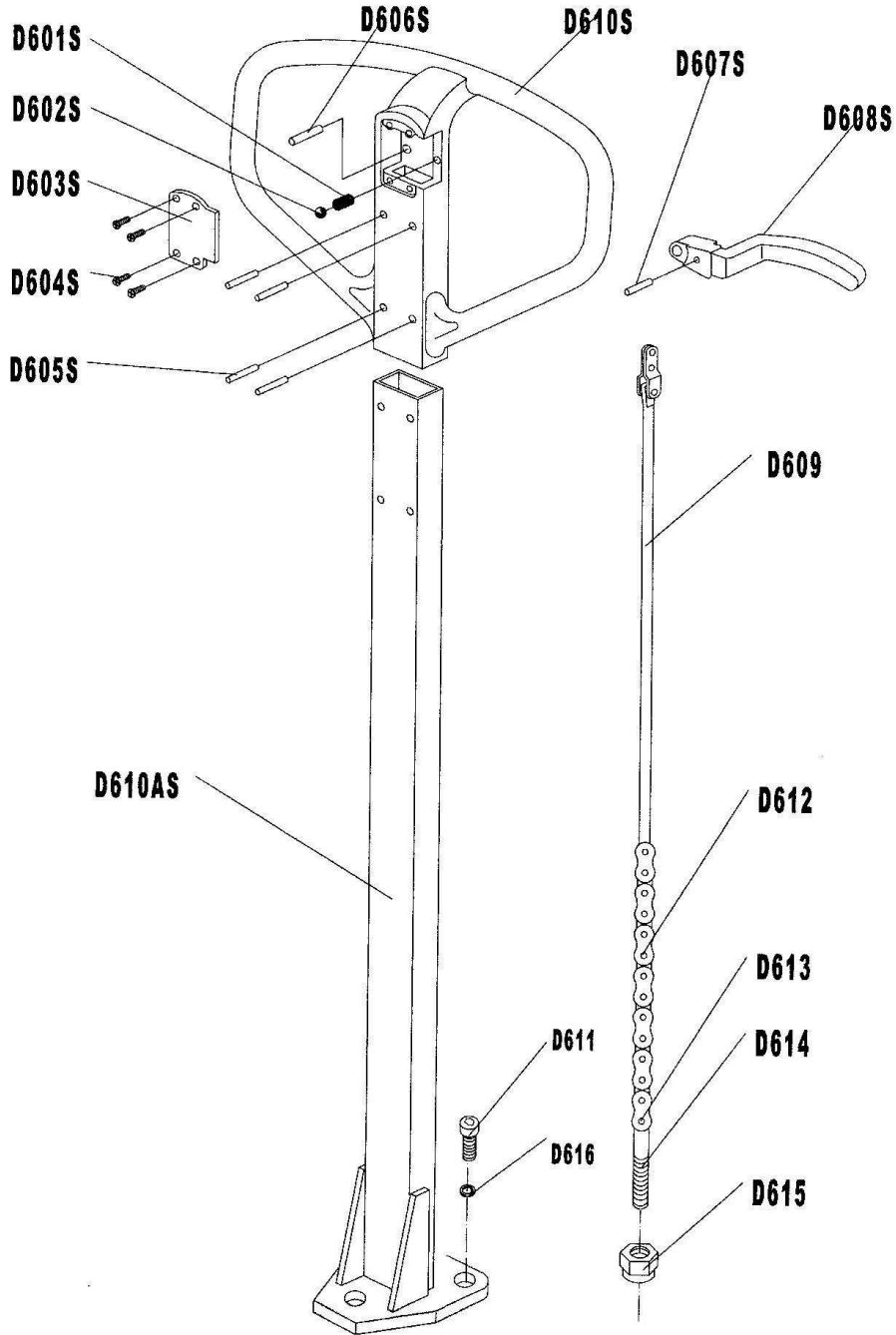




List of Handle

No.	Description	Qty.	Remark	No.	Description	Qty.	Remark
D601	Spring	1		D610B	Handle	1	For Type A
D602	Blade Spring	1		D610A	Handle	1	For Type B
D603	Roller	1		D611	Screw	3	
D604	Elastic Pin	1		D612	Chain	1	
D605	Elastic Pin	1		D613	Pin	1	
D606	Elastic Pin	1		D614	Adjusting Bolt	1	
D607	Elastic Pin	1		D615	Adjusting Nut	1	
D608	Control Handle	1		D616	Elastic Washer	3	
D609	Pull Board	1					

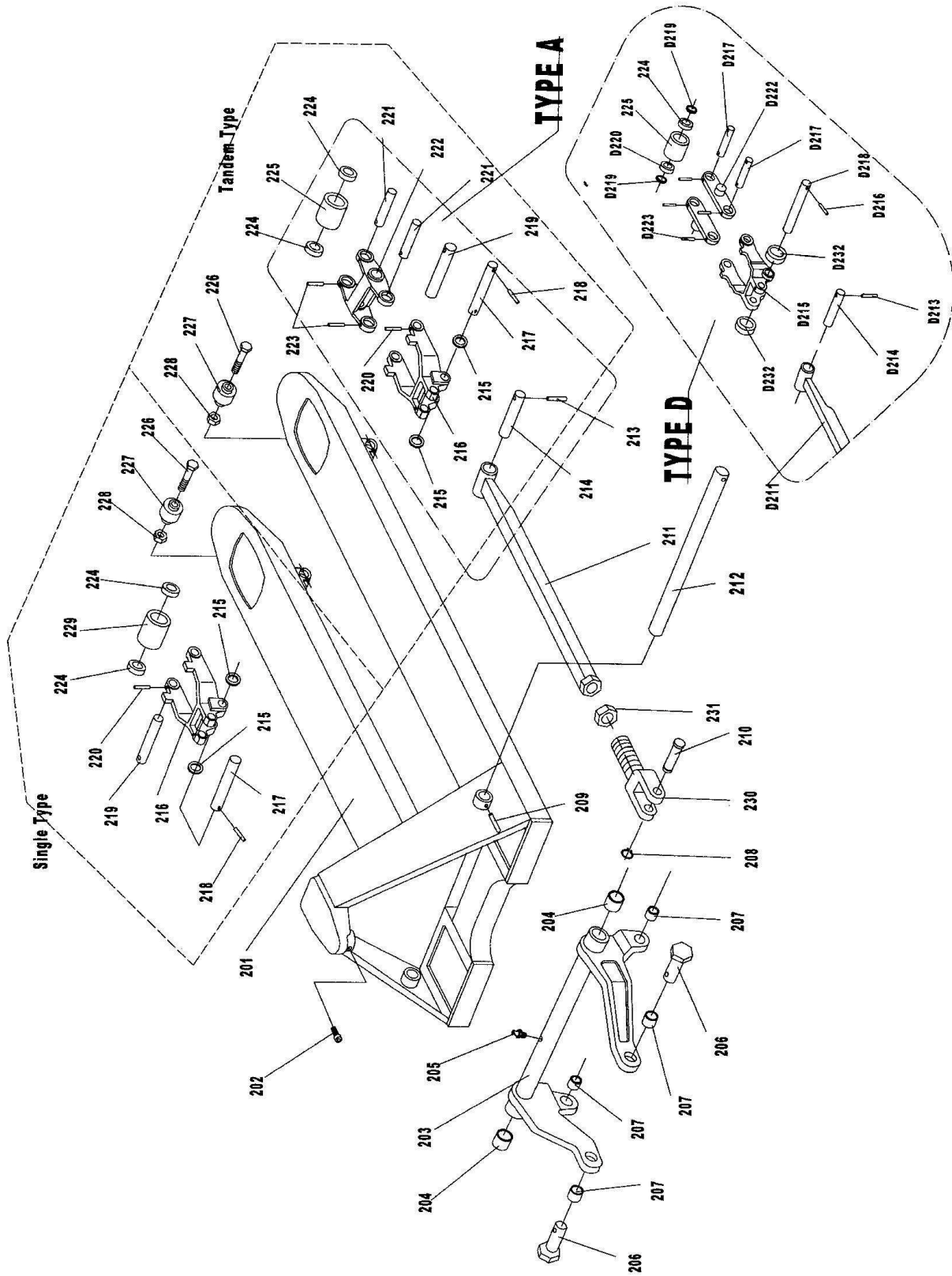
Type D



List of Handle

No.	Description	Qty.	Remark	No.	Description	Qty.	Remark
D601S	Spring	1	Only for Type D	D610S	Handle	1	Only for Type D
D602S	Steel Ball	1		D610AS	Draw - bar	1	
D603S	Cover	1		D611	Screw	3	
D604S	Screw	4		D612	Chain	1	
D605S	Pin	4		D613	Pin	1	
D606S	Pin	1		D614	Adjusting Bolt	1	
D607S	Elastic Pin	1		D615	Adjusting Nut	1	
D608S	Control Handle	1		D616	Elastic Washer	3	
D609S	Pull Board	1					

Fork Frame

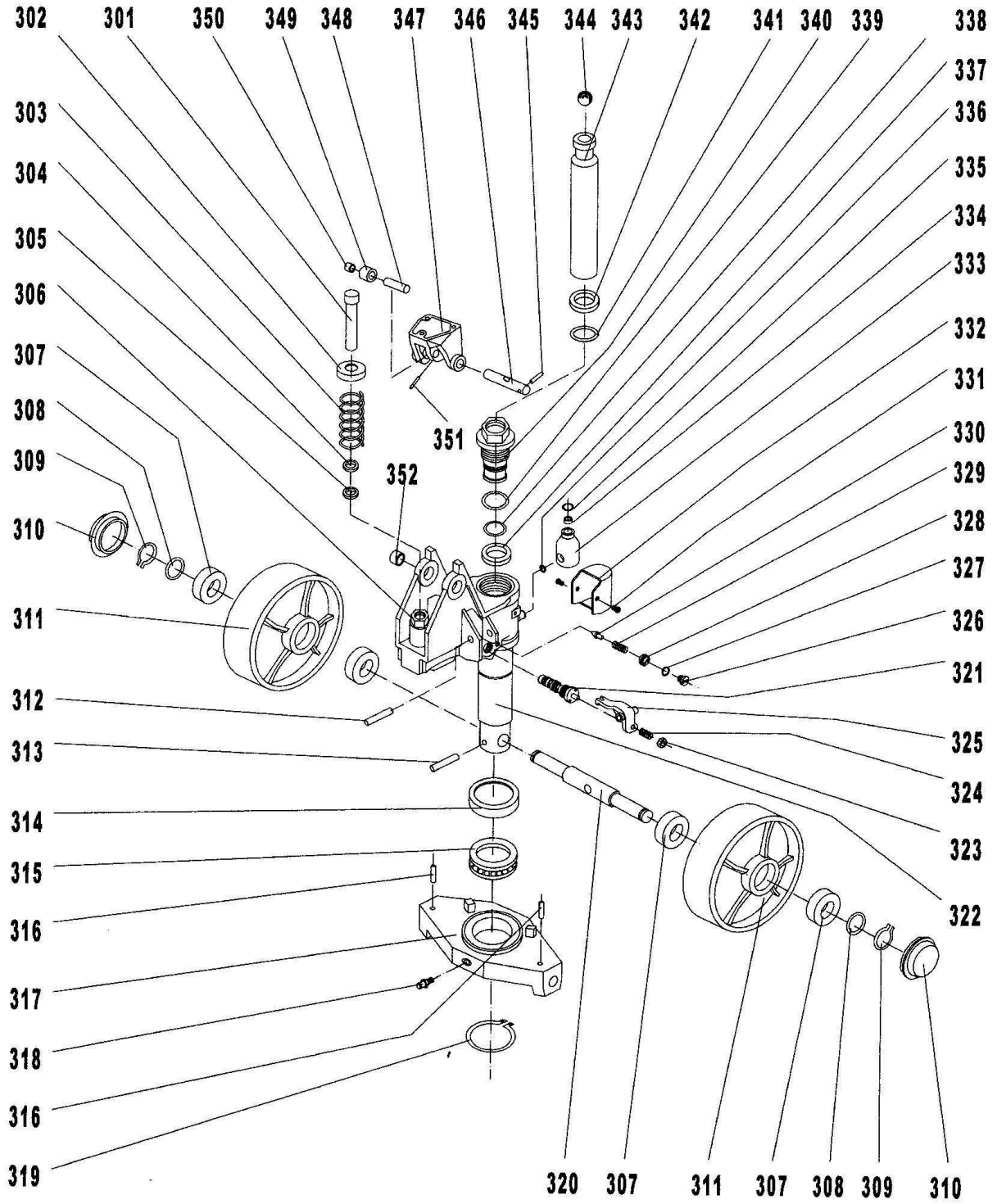


Parts List of Fork Frame

PARTS NO.	DESCRIPTION	QTY	Remark	
201	Fork Frame	1		
202	Bolt	1		
203	Rock-Arm	1		
204	Bushing	2		
205	Oil-Holder	1		
206	Shaft	2		
207	Bushing	4		
208	Retaining Ring	1		
209	Elastic Pin	1		
210	Pin	2		
212	Shaft	1		
211	Pushing Rod	2	FOR TYPE A	
213	Elastic Pin	2		
214	Shaft	2		
215	Washer	4		
216	Frame of Load Roller	2		
217	Shaft	2		
218	Elastic Pin	2		
219	Shaft	2		
220	Elastic Pin	2		
221#	Shaft	4		
222#	Tandem Mounting	2		
223#	Elastic Pin	4		
D211	Pushing Rod	2		FOR TYPE D
D212	Shaft	2		
D213	Elastic Pin	2		
D214	Shaft	2		
D215	Frame of Roller	2		
D216	Elastic Pin	2		
D217#	Shaft for Roller	4		
D219	Washer	8 or 4		
D222#	Linking Plate	4		
D232	Washer	2		
224	Bearing	4/8		
225#	Roller	4		
226	Bolt	2		
227	Enter Roller	2		
228	Locking Nut	2		
229*	Wheel	2		
230	Joint	2		
231	Nut	2		

(Note # --For Tandem wheel, * --For single wheel)

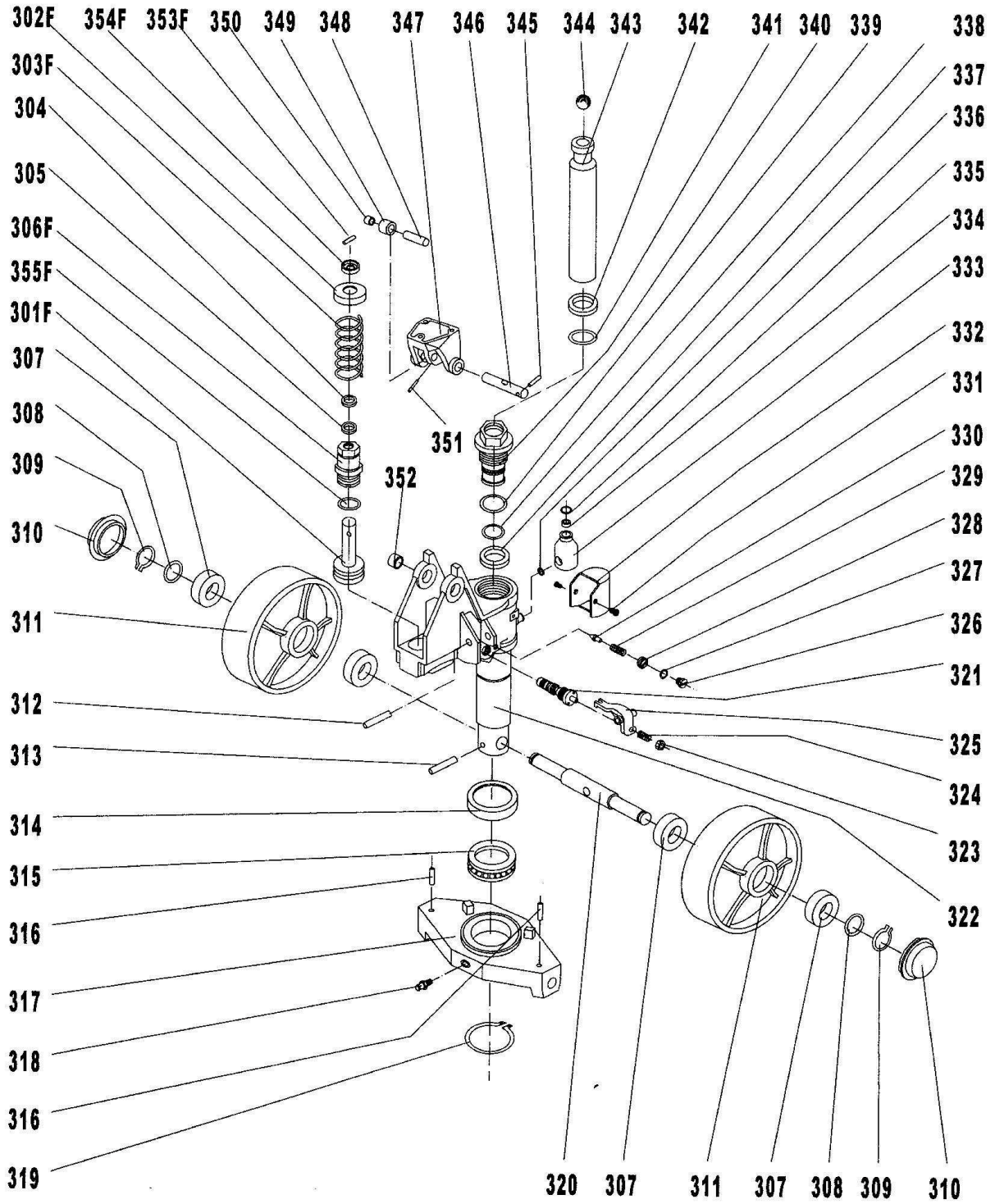
PUMP



LIST for PUMP UNIT

No.	Description	Quantity
301	Pump Piston	1
302	Spring Cap	1
303	Spring	1
304	Dust Ring	1
305	Y - Seal	1
306	Cylinder	1
307	Bearing	4
308	Washer	2
309	Locking Ring	2
310	Dust Cover	2
311	Steering Wheel	2
312	Elastic Pin	1
313	Elastic Pin	1
314	Cover of Bearing	1
315	Bearing	1
316	Elastic Pin	2
317	Thrust Plate	1
318	Grease Cup	1
319	Retaining Ring	1
320	Shaft of Steering Wheel	1
321	Valve Cartridge	1
322	Pump Body	1
323	Nut	1
324	Adjusting Screw	1
325	Lever Plate	1
326	Screw Plug	1
327	O – Ring	1
328	Adjusting Bolt	1
329	Spring	1
330	Spindle of Safety Valve	1
331	Screw	2
332	Cover of Oil Tank	1
333	Oil Tank	1
334	Plug of Tank	1
335	O – Ring	1
336	O – Ring	1
337	Y - Seal	1
338	O – Ring	1
339	O – Ring	1
340	Screw Cover of Pump	1
341	O – Ring	1
342	Dust Ring	1
343	Piston Rod	1
344	Steel Ball	1
345	Elastic Pin	1
346	Shaft with Hole	1
347	Bracket	1
348	Pin	1
349	Pressure Roller	1
350	Bushing	1
351	Elastic Pin	1
352	Bushing	2

PUMP UNIT for QUICK LIFTING



No.	Description	Quantity
301F	Pump Piston	1
302F	Spring Cap	1
303F	Spring	1
304	Dust Ring	1
305	Y - Seal	1
306F	Cylinder	1
307	Bearing	4
308	Washer	2
309	Locking Ring	2
310	Dust Cover	2
311	Steering Wheel	2
312	Elastic Pin	1
313	Elastic Pin	1
314	Cover of Bearing	1
315	Bearing	1
316	Elastic Pin	2
317	Thrust Plate	1
318	Grease Cup	1
319	Retaining Ring	1
320	Shaft of Steering Wheel	1
321	Valve Cartridge	1
322	Pump Body	1
323	Nut	1
324	Adjusting Screw	1
325	Lever Plate	1
326	Screw Plug	1
327	O – Ring	1
328	Adjusting Bolt	1
329	Spring	1
330	Spindle of Safety Valve	1
331	Screw	2
332	Cover of Oil Tank	1
333	Oil Tank	1
334	Plug of Tank	1
335	O – Ring	1
336	O – Ring	1
337	Y - Seal	1
338	O – Ring	1
339	O – Ring	1
340	Screw Cover of Pump	1
341	O – Ring	1
342	Dust Ring	1
343	Piston Rod	1
344	Steel Ball	1
345	Elastic Pin	1
346	Shaft with Hole	1
347	Bracket	1
348	Pin	1
349	Pressure Roller	1
350	Bushing	1
351	Elastic Pin	1
352	Bushing	2
353F	Pin	1
354F	Cover	1
355F	O - Ring	1