

Instruction Manual

Low Profile Lift Table



Note: Owner/Operator must read and understand this instruction manual before using the low profile lift table.

THANK YOU VERY MUCH FOR SELECTING OUR PRODUCT. THIS INSTRUCTION MANUAL DESCRIBES CORRECT OPERATING METHOD TO ENSURE PROLONGED SERVICE LIFE. PLEASE READ AND COMPLETELY UNDERSTAND THIS MANUAL BEFORE OPERATING THE LOW PROFILE LIFT TABLE. ALWAYS KEEP THIS MANUAL AT AN APPROPRIATE PLACE. IF THE MANUAL OR WARNING DECAL IS MISSING, PLEASE CONTACT WITH DEALER.

Note: This Manual has been prepared for skilled and competent personal. It provides instructions for using the product correctly and parts list. This Manual cannot replace the professional skills and expertise of the user.

1.



WARNING! *If operating the lift table improperly, a person may be seriously injured. Therefore, operate properly according to the following instruction*

- ◇ Read & thoroughly understand the Instruction Manual completely before using. Follow all safety instructions strictly.
- ◇ It is necessary to check all safety devices before operation.
- ◇ Make sure that there are no obstacles in the working area.
- ◇ Do not put foot or hand in scissors mechanism or through frame.
- ◇ Screw the lifting eyes on the base frame before working on the lift table.
- ◇ Do not overload the lift table. Load should be distributed on the table according to relevant load distribution chart.
- ◇ Pay attention if local voltage and frequency is as same as the input specification of the lift table.
- ◇ Use the lift table on flat and solid ground.
- ◇ All the electrical connection and disconnection operations must be carried out by skilled and competent personal.
- ◇ While operation, it is forbidden to contact the moving parts of the lift

table.

- ◇ While the lift table moving, it is forbidden to adjust or to move the load.
- ◇ It is forbidden to lift the load, which perhaps does harm to a person or other object.
- ◇ It is forbidden to operate the lift table while a person is under the table.
- ◇ Do not adjust the safety valve of hydraulic power pack.
- ◇ It is forbidden to operate the lift table even if there is small structure distortion.
- ◇ Do not use in an explosive or flammable place.

2.



CAUTION! *If operating the lift table improperly, a person may be injured. Therefore, operate properly according to the following instruction.*

- ◇ The lift table is a movable lifter designed to lift or lower rated load. Do not use it for other purpose.
- ◇ Do not allow a person to operate the lift table, who does not understand its operation.
- ◇ It is forbidden to change the lift table without manufacturer's written admission.
- ◇ It is necessary to use the spare parts designated by manufacturer.
- ◇ Make sure to keep a distance between the table and ambient objects enough to operate the lift table safely.
- ◇ Keep the hydraulic system under clean and safe condition.
- ◇ The hydraulic power pack features an electric lowering control. The coils must be fed with the required voltage as described on those coils. The power supply voltage should not exceed $\pm 10\%$ of the rated required voltage.
- ◇ Always do maintenance and routine check while the lift table is unloaded.

- ◇ The lift table is not waterproof and should be used in a dry environment.

3.DAILY INSPECTION

Daily inspection is effective to find the malfunction or fault on the lift table. Before operation, check the lift table according to the following points.



CAUTION! Do not use the lift table if any malfunction or fault is found.

- ◇ Check all the terms of WARNING and CAUTION.
- ◇ Check scratches, bending or crack on the lift table.
- ◇ Check smooth movement of the table.
- ◇ Check if there is any hydraulic oil leakage.
- ◇ Check the vertical creep of the table.
- ◇ Check if all the bolts and nuts are firmly tightened.

4.OPERATING THE LIFT TABLE

■ LOADING

The maximum capacity of the lift table is 1000kg. Load should be distributed on the lift table equably.

■ Lifting the Table



CAUTION! Do not overload the lift table. Ensure the balance of loading. Do not load partially or concentrically.

- ◇ Screw and loose emergency stop switch.
- ◇ Push the UP button and power pack starts to work to lift the load.
- ◇ Loose the UP button and power pack stops working.

■ Lowering the Table



WARNING! Do not put foot or hand in scissors mechanism.

- ◇ Push the DOWN button and the table will lower.
- ◇ Loose the DOWN button and the table will stop.

NOTE

- ◇ The table is equipped with an aluminum guard to avoid accidental danger.
- ◇ If aluminum guard strikes an object while the table lowers, stop operation and check the lift table. After making sure no any abnormality, strike the UP button slightly and then the electric system will function as before.
- ◇ Emergency stop
- ◇ There are two methods of emergency stop as follows.
- ◇ Push down the emergency stop switch and the movement of table stops.
- ◇ Strike aluminum guard upward and the movement of table also stops.

■ Transportation

If necessary, the lift table can be transported with attached ringbolts.

- ◇ Pay attention to the maximum capacity of lifting equipment to be used.
- ◇ Keep the ringbolts with reasonableness.

■ MOTOR WORKING TIME

- ◇ Motors can work long hours

5.SPECIFICATIONS

Model		HU600 (MJ-F600)	HU1000 (MJ-F1000)	HU1500 (MJ-F1500)
Capacity	(kg)	600	1000	1500
Collapsed Height	(mm)	85	85	105
Max. Height	(mm)	860	860	880
Platform Length	(mm)	1450	1450	1600
Platform Width	(mm)	985	1140	1180
Approx. Lifting Time while Loaded Rated Capacity		≤25	≤25	≤30
Motor	Output (w)	750	750	1500
	Voltage (V)	380		
	Revolution (r/min)	1400		
	Protection Class	IP.54		
	Insulation Class	F.		
Net Weight	(kg)	207	280	380

6.HYDRAULIC CIRCUIT & ELECTRIC PRINCIPLE DIAGRAM

See Figure 1 & Figure 2.

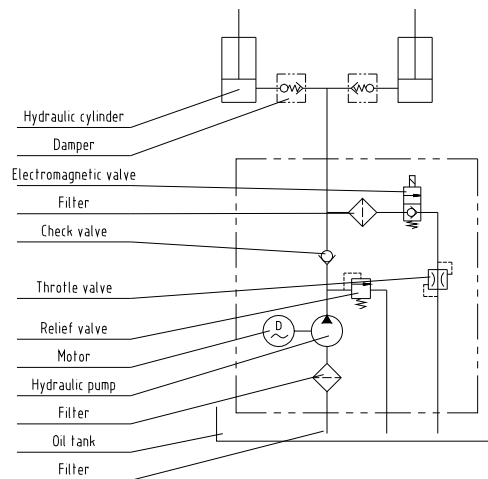
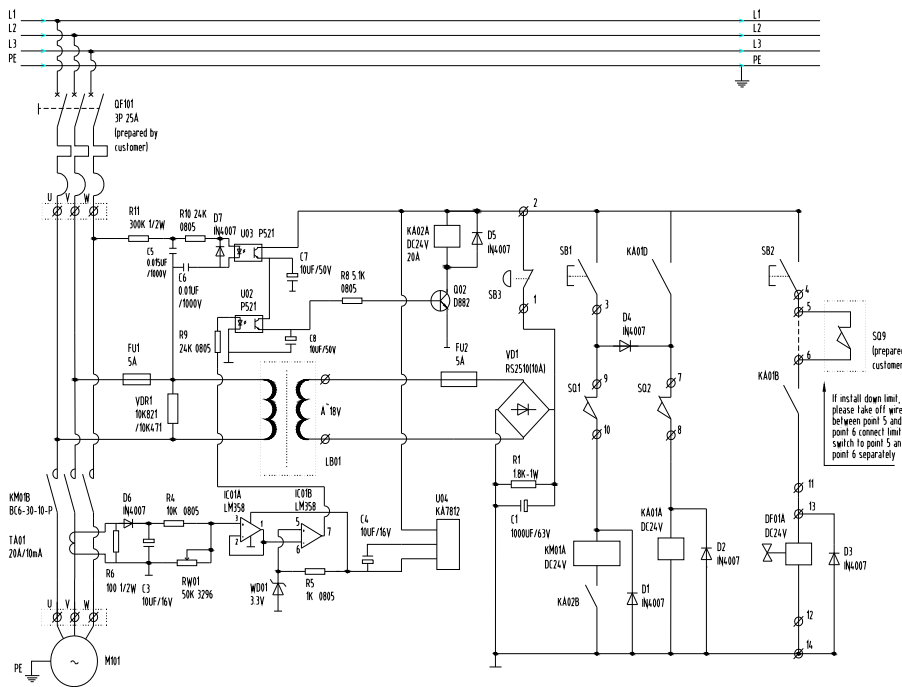


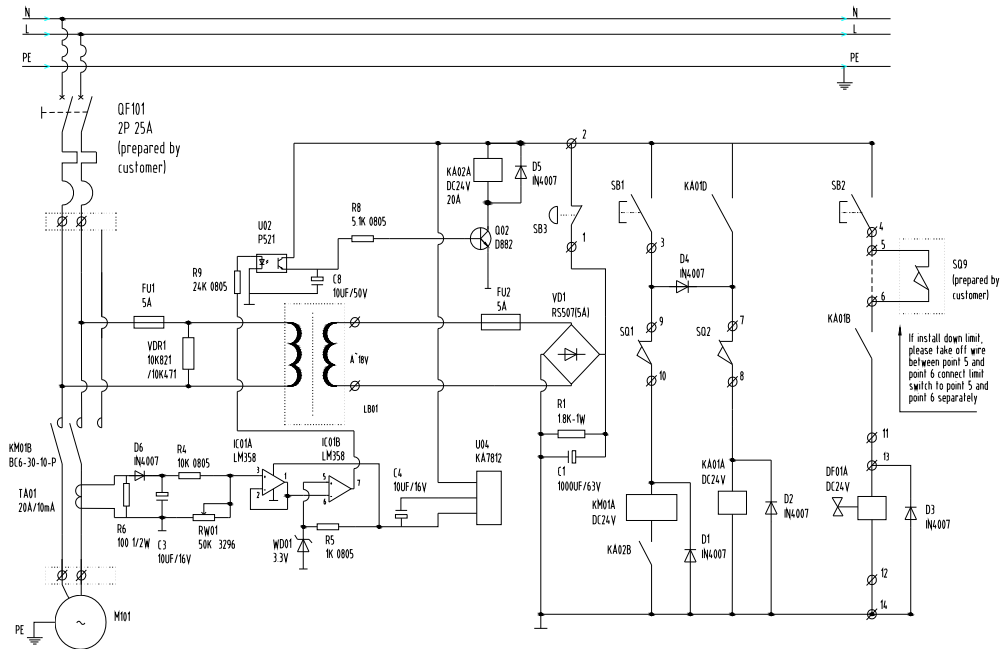
Fig. 1 Hydraulic circuit



No	Type	Name	Description	Qty
1	LB01	Control power transformer	DF30-110V-460V/0-24V 50VA	1
2	F1 F2	Fast melter	5A	2
3	VD1	Rectifier	RS-2510	1
4	VDR1	Voltage dependent resistor	10K/471 10K/821	1
5	R1	Resistor	1.8K/1W	1
6	C1	Electrolytic condenser	470uF/50V	1
7	KM01	AC contactor	BC-30-10	1
8	KA1 KA2	Middle relay	SRC-24VDC-SH	2
9	D1 D2 D3 D4 D5 D6 D7	Silicon rectifying diode	IN4007	7
10	DF01	Electromagnetic valve	DC24V	1
11	SB3	Emergency stop button	XB2-ES542C+ZB-BY9101	1
12	SB2	Down button	XB2-BA21C	1
13	SB1	Up button	XB2-BA21C	1
14	SQ1	Up limit switch	D4V-8108Z	1
15	SQ2	safety switch		2
16	SQ9	Down limit switch	D4V-8108Z(Prepared by customer)	1

17	M101	Pump motor		1
18	QF101	Circuit breaker	C45N3P 25A(Prepared by customer)	1
19	R6	Resistor	100/0.5w	1
20	R4	Resistor	10K/0805	1
21	R5	Resistor	1K/0805	1
22	RW01	Rheostat	50K	1
23	WD01	Stabilovolt tube	3.3V	1
24	C3 C4 C7 C8	Electrolytic condense	10uf/50V 10uf/16V	3
25	IC01	Integrated circuit	LM358	1
26	U04	Integrated circuit	KA7812	1
27	U02 U03	Electric dipole	P521	2
28	TA01	Current transformer	20A	1
29	R9 R10	Resistor	24K/0805	2
30	R8	Resistor	5.1K/0805	1
31	R11	Resistor	300K/0.5W	
32	C5 C6	Electrolytic condenser	0.015uF/1000V 0.01uF/1000V	2

Fig. 2 Electric Principle Diagram (3 P)



No	Type	Name	Description	Qty
1	LB01	Control power transformer	DF30-110V-460V/0-24V 50VA	1
2	F1 F2	Fast melter	5A	2
3	VD1	Rectifier	RS-2510	1
4	VDR1	Voltage dependent resistor	10K/471 10K/821	1
5	R1	Resistor	1.8K/1W	1
6	C1	Electrolytic condenser	470uF/50V	1
7	KM01	AC contactor	BC-30-10	1
8	KA1 KA2	Middle relay	SRC-24VDC-SH	2
9	D1 D2 D3 D4 D5 D6 D7	Silicon rectifying diode	IN4007	7
10	DF01	Electromagnetic valve	DC24V	1
11	SB3	Emergency stop button	XB2-ES542C+ZB-BY9101	1
12	SB2	Down button	XB2-BA21C	1
13	SB1	Up button	XB2-BA21C	1
14	SQ1	Up limit switch	D4V-8108Z	1
15	SQ2	safety switch		2
16	SQ9	Down limit switch	D4V-8108Z(Prepared by customer)	1
17	M101	Pump motor		1
18	QF101	Circuit breaker	C45N3P 25A(Prepared by customer)	1
19	R6	Resistor	100/0.5w	1
20	R4	Resistor	10K/0805	1
21	R5	Resistor	1K/0805	1
22	RW01	Rheostat	50K	1
23	WD01	Stabilovolt tube	3.3V	1
24	C3 C4 C8	Electrolytic condense	10uf/50V	3
25	IC01	Integrated circuit	LM358	1
26	U04	Integrated circuit	KA7812	1
27	U02	Electric dipole	P521	1
28	TA01	Current transformer	20A	1
29	R9	Resistor	24K/0805	1
30	R8	Resistor	5.1K/0805	1

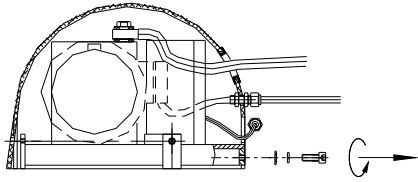
Fig. 2 Electric Principle Diagram (2 P)

7. Service INSTRUCTIONS

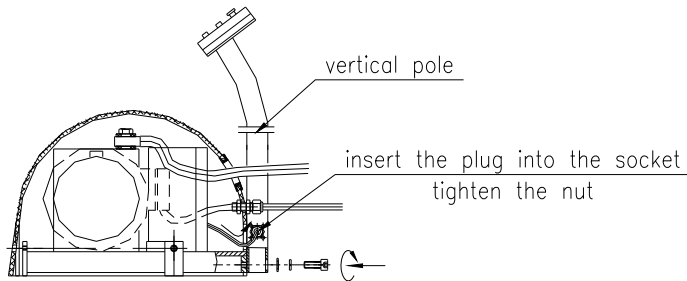
- Do routine check of fasteners, packing and oil leaking.
 - Do routine check of the function of the lift table.
 - Before service the lift table, make sure to turn off the AC power supply.
 - After service it is necessary to check the function of the lift table again.
 - ONLY a qualified personnel can do service work.
 - Do routine check of the micro-switches on the safety guard.
 - Do routine check of the hydraulic system by listening its noise, touch motor's surface.
- Caution:** *It is necessary to turn off the AC power supply before touch motor's surface.*
- Pay attention to clear or even replace the oil filter after operating for a long time.
 - Appropriate lubrication is necessary to make the lift table work easily and have a prolonged service life.
 - Following table is recommended to service the lift table periodically.

Content	After every 500 hours' working or every 3 months later	After every 2000 hours' working or every year
Check oil level of oil tank	☆	
Check the cleanliness of oil filter	☆	
Fasten all the connecting parts again	☆	
Check wear and tear of pressure oil pipes	☆	
Check hydraulic cylinder	☆	
Fix main parts tightly again	☆	
Check the function of micro-switches	☆	
Check whole working state of the lift table	☆	
Lubricate all the joints and pivot points	☆	
Check wear and tear of all axial bushes		☆
Replace hydraulic oil for the first time	Accumulated working ten hours'	
Replace hydraulic oil		☆
Check oil leaking		☆
Remark: ☆ stands for proceeding the item.		

Instruction for Power Pack Installment

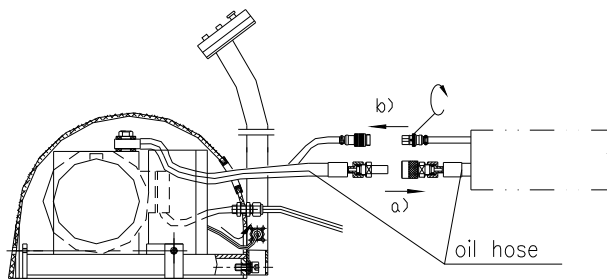


1. Loosen the bolt



2. a) Install the vertical pole and the cocer by tightening the crew as being showed in the figure;

b) Insert the plug connecting with the electeic box into the socket on the pole,then tighten the screw.



2. a) Insert the plug into the socket ,then tighten the screw. showed in the figure;

b) Insert the plug into the socket ,then tighten the screw.

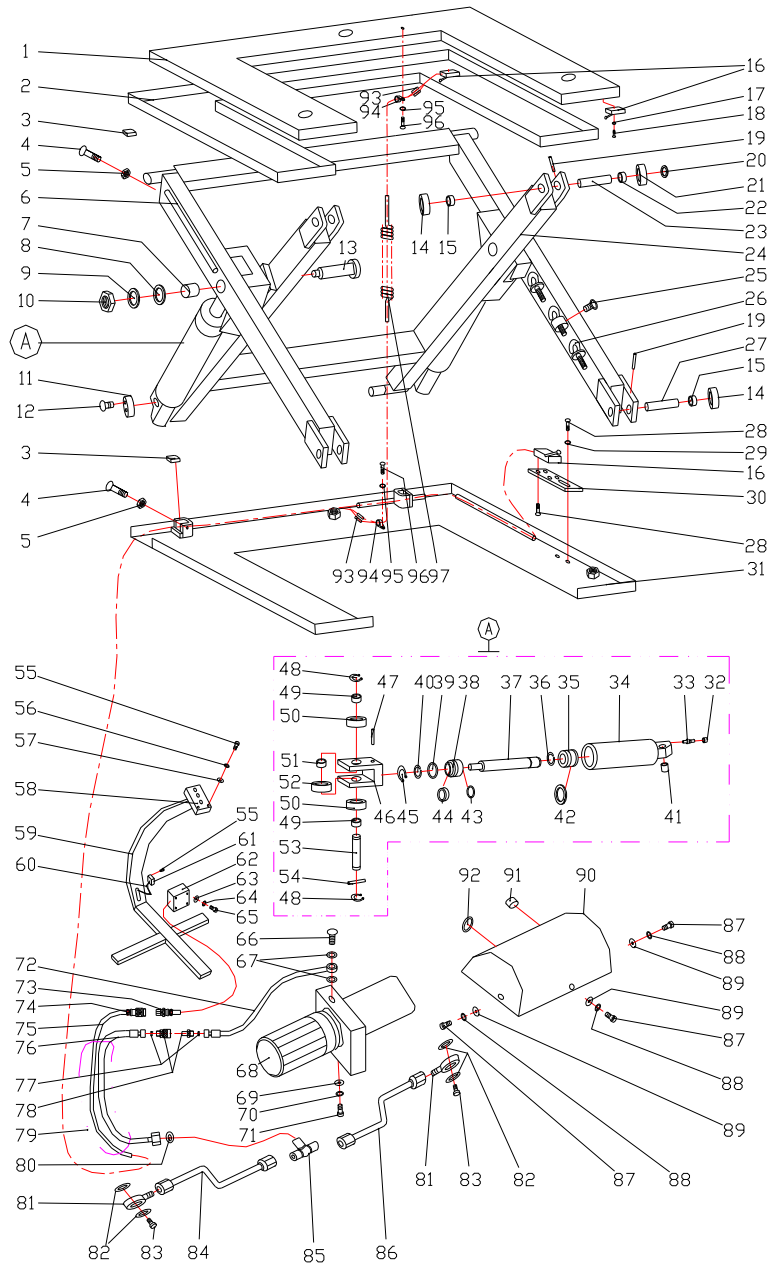
8.TROUBLE SHOOTING

Note: Before service it is necessary to screw two eyebolts into relevant screw-holes on the basis when the table is in the highest position, lest the table lowers accidentally

Trouble	Cause	Remedy
Table cannot lift while motor works normally	<ul style="list-style-type: none"> ◇ Eyebolt has not been removed ◇ AC voltage phases mistake ◇ Electromagnetic dysfunctions ◇ The table is overloaded 	<ul style="list-style-type: none"> ◇ Remove eyebolt ◇ Correct AC voltage phase ◇ Check the function of electromagnetic valve and repair it ◇ Remove excessive load
Table cannot lift and motor does not work	<ul style="list-style-type: none"> ◇ Lowering limit switch (if existed) damaged 	<ul style="list-style-type: none"> ◇ Replace limit switch
Table cannot lower	<ul style="list-style-type: none"> ◇ Lowering limit switch or micro-switch on safety guard damaged ◇ Electromagnetic valve dysfunctions ◇ Safety guard works ◇ Something wrong with electric circuit board ◇ Eyebolt has not been removed 	<ul style="list-style-type: none"> ◇ Replace lowering limit switch or micro-switch. ◇ Check the function of electromagnetic valve and repair it ◇ Strike the UP button slightly ◇ Replace electric circuit board ◇ Remove eyebolt
Table's legs go over limit position (if existed) while table lowers	<ul style="list-style-type: none"> ◇ Internal leaking in electromagnetic valve ◇ Packing damaged in hydraulic cylinder 	<ul style="list-style-type: none"> ◇ Repair electromagnetic valve and if necessary replace it ◇ Check and replace packing
Table cannot reach the highest position	<ul style="list-style-type: none"> ◇ Oil not enough ◇ Limit switch damaged 	<ul style="list-style-type: none"> ◇ Fill enough oil ◇ Check and repair limit switch. If necessary, replace it

The brand of oil is ISO HL32(such as Rando oil R&O32、D.T.E.oil light、Turbo32)

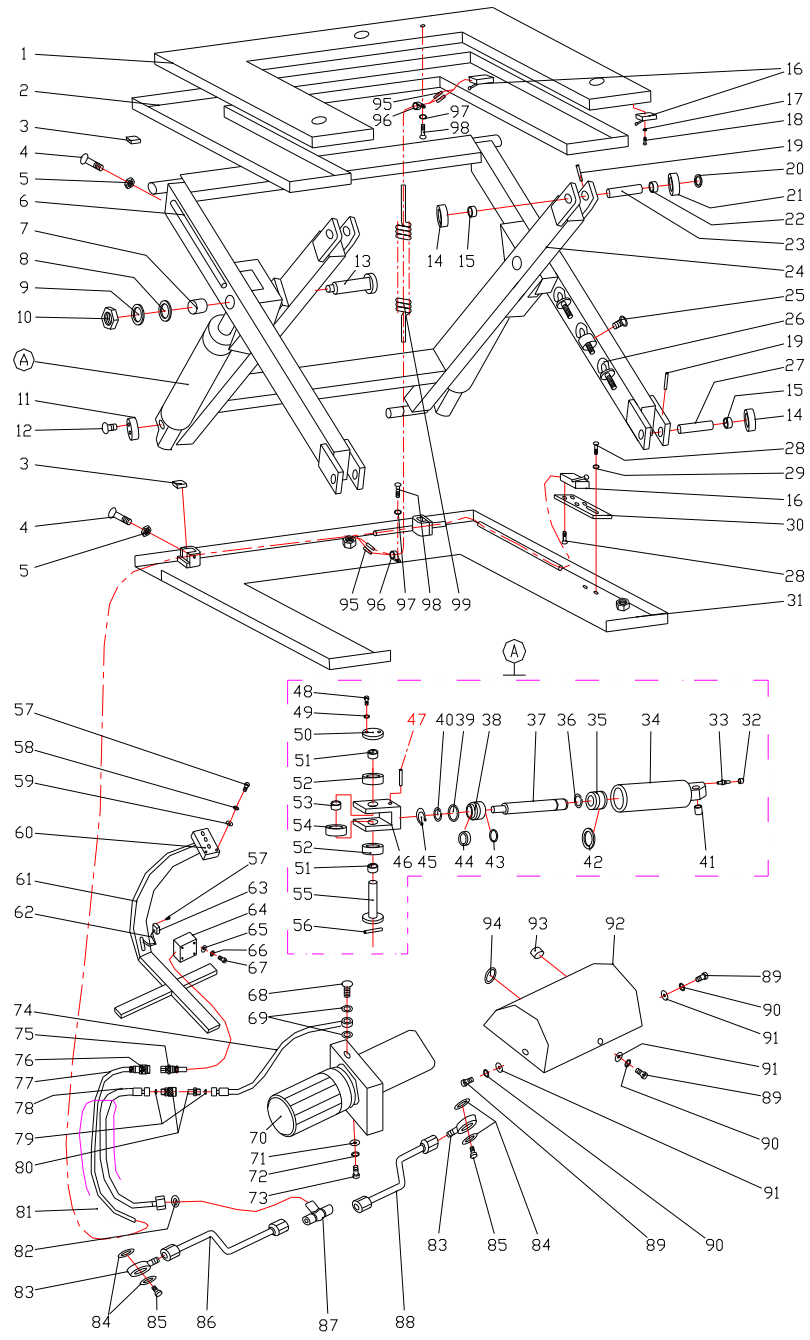
LIFT TABLE HU1000



PART LIST HU1000(MJ-F1000)

No.	Description	Qty	No.	Description	Qty
1	Table	1	50	Roller	4
2	Safety guard	1	51	Axial bush	2
3	Nylon washer	4	52	Middle roller	2
4	Bolt M6x50	4	53	Roller axle	2
5	Locknut M6	4	54	Spring straight pin $\phi 4 \times 40$	2
6	External scissor	1	55	Screw M3x10	8
7	Bush	2	56	Spring washer 3	4
8	Nylon washer	2	57	Washer 3	4
9	Washer	2	58	Control switch	1
10	Locknut M24	2	59	Hydraulic-pump unit base	1
11	Axial cover	2	60	Control wire	1
12	Screw M5x16	4	61	Plug	1
13	Middle axle	2	62	Electrical box	1
14	Short wheel	4	63	Washer 5	4
15	Short bush	4	64	Spring washer 5	4
16	Switch	7	65	Screw M5x10	4
17	Washer 3	28	66	Pipe-joint	2
18	Screw M3x25	14	67	Seal ring 14	4
19	Spring straight pin 5x50	4	68	Hydraulic power pack	1
20	Retaining ring 20	2	69	Washer 10	2
21	Long wheel	2	70	Spring washer 10	2
22	Long bush	2	71	Screw M10x20	2
23	Nylon wheel axle I	2	72	Height pressure hose I	1
24	Internal scissor	1	73	Plug	1
25	Screw M6x10	3	74	Socket	1
26	Eyebolt	3	75	Switch wire	1
27	Nylon wheel axle II	2	76	Height pressure hose II	1
28	Screw M5x12	6	77	Seal ring 14	2
29	Washer 5	2	78	Ball valve	1
30	Mounted plate	1	79	Height pressure hose set	1
31	Chassis	1	80	O-ring $\phi 10 \times 1.8$	1
32	Bush	2	81	Joint pin	2
33	Anti-explosive valve	2	82	Seal ring 12	4
34	Cylinder tube	2	83	Joint bolt	2
35	Piston	2	84	Long tube assembly	1
36	Snap Ring 25	2	85	T joint	1
37	Piston rod	2	86	Short tube assembly	1
38	Cylinder cover	2	87	Screw M6x12	3
39	O-ring $\phi 55 \times 2.65$	2	88	Spring washer 6	3
40	Snap Ring 60	2	89	Washer 6	3
41	Lager axial bush	2	90	Power-unit cover	1
42	Packing Assembly	2	91	Plastic joint	1
43	O-ring $\phi 25 \times 2.65$	2	92	Rubber bush	1
44	Packing UHS25	2	93	Terminal Blocks	4
45	Retaining ring for axle 55	2	94	Cable clamp	2
46	Roller base	2	95	Washer 4	2
47	Spring straight pin $\phi 6 \times 35$	2	96	Screw M4x6	2
48	Retaining ring 22	4	97	Coiled cable	1
49	Small axial bush	4			

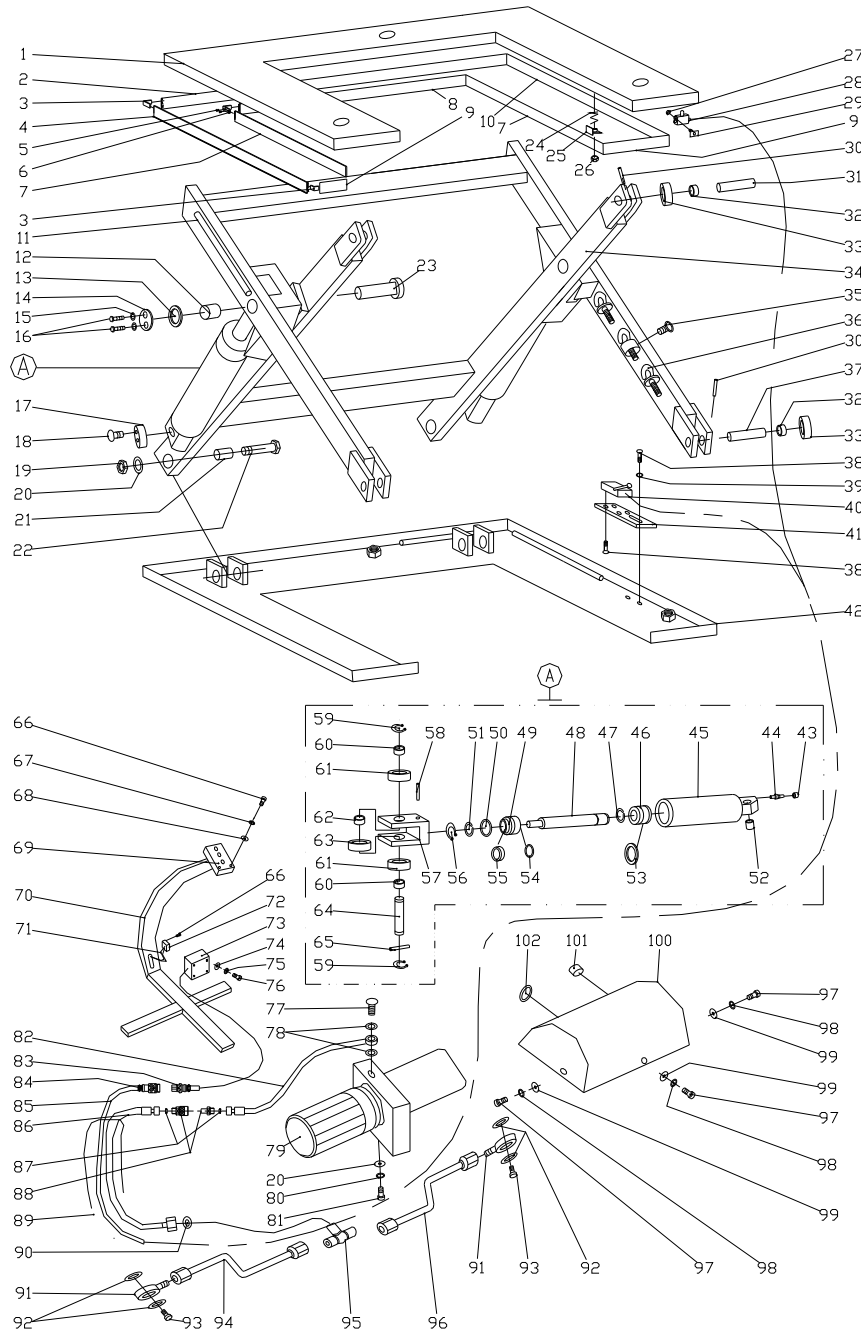
LIFT TABLE HU1500



PART LIST HU1500(MJ-F1500)

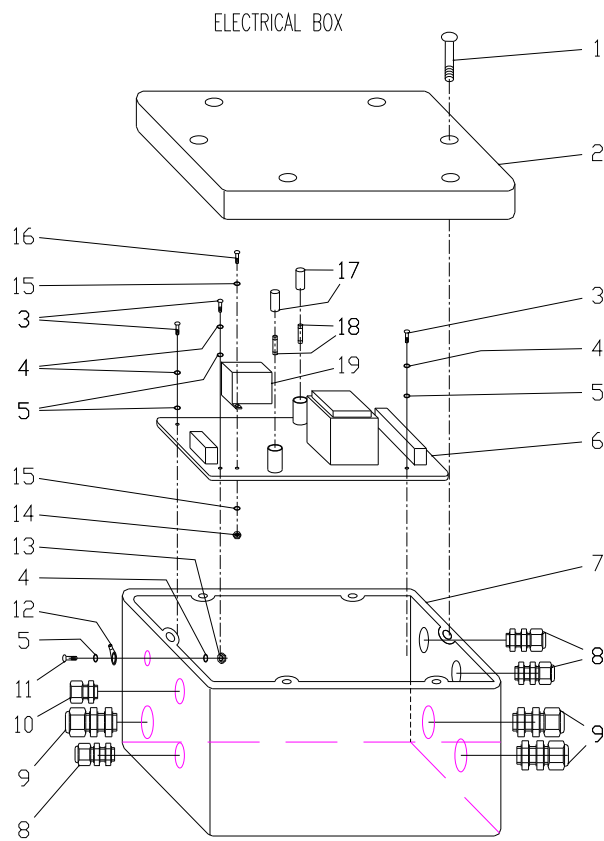
No.	Description	Qty	No.	Description	Qty
1	Table	1	51	Small axial bush	4
2	Safety guard	1	52	Roller	4
3	Nylon washer	4	53	Axial bush	2
4	Bolt M6x50	4	54	Middle roller	2
5	Locknut M6	4	55	Roller axle	2
6	External scissor	1	56	Spring straight pin $\phi 4 \times 40$	2
7	Bush	2	57	Screw M3x10	8
8	Nylon washer	2	58	Spring washer 3	4
9	Washer	2	59	Washer 3	4
10	Locknut M24	2	60	Control switch	1
11	Axial cover	2	61	Hydraulic-pump unit base	1
12	Screw M5x16	4	62	Control wire	1
13	Middle axle	2	63	Plug	1
14	Short wheel	4	64	Electrical box	1
15	Short bush	4	65	Washer 5	4
16	Switch	7	66	Spring washer 5	4
17	Washer 3	28	67	Screw M5x10	4
18	Screw M3x25	14	68	Pipe-joint	2
19	Spring straight pin 5x60	4	69	Seal ring 14	4
20	Retaining ring for axle 25	2	70	Hydraulic power pack	1
21	Long wheel	2	71	Washer 10	2
22	Long bush	2	72	Spring washer 10	2
23	Nylon wheel axle I	2	73	Screw M10x20	2
24	Internal scissor	1	74	Height pressure hose I	1
25	Screw M6x10	3	75	Plug	1
26	Eyebolt	3	76	Socket	1
27	Nylon wheel axle II	2	77	Switch wire	1
28	Screw M5x12	6	78	Height pressure hose II	1
29	Washer 5	2	79	Seal ring 14	2
30	Mounted plate	1	80	Ball valve	1
31	Chassis	1	81	Height pressure hose set	1
32	Bush	2	82	O-ring $\phi 10 \times 1.8$	1
33	Anti-explosive valve	2	83	Joint pin	2
34	Cylinder tube	2	84	Seal ring 12	4
35	Piston	2	85	Joint bolt	2
36	Snap Ring 40	2	86	Long tube assembly	1
37	Piston rod	2	87	T joint	1
38	Cylinder cover	2	88	Short tube assembly	1
39	O-ring $\phi 75 \times 2.65$	2	89	Screw M6x12	3
40	Snap Ring $\phi 80$	2	90	Washer 6	3
41	Lager axial bush	2	91	Washer 6	3
42	Packing Assembly	2	92	Power-unit cover	1
43	O-ring $\phi 40 \times 2.65$	2	93	Plastic joint	1
44	Packing UHS2x40x7	2	94	Rubber bush	1
45	Retaining ring for axle $\phi 75$	2	95	Terminal Blocks	4
46	Roller base	2	96	Cable clamp	2
47	Spring straight pin $\phi 6 \times 40$	2	97	Washer 4	2
48	Screw M5x14	4	98	Screw M4x6	2
49	Spring washer 5	4	99	Coiled cable	1
50	Washer	2			

LIFT TABLE HU600



PART LIST HU600(MJ-F600)

No	Description	Qty	No	Description	Qty
1	Table	1	52	Lager axial bush	2
2	Width safety guard I	1	53	Packing Assembly	2 set
3	Connected-board I	6	54	O-ring $\phi 25 \times 2.65$	2
4	Long safety guard I	1	55	Packing UHS25	2
5	Screw M4 \times 5	8	56	Retaining ring for axle 55	2
6	Connected-board II	2	57	Roller base	2
7	Long safety guard II	2	58	Spring straight pin $\phi 6 \times 35$	2
8	Width safety guard II	1	59	Retaining ring for axle 22	4
9	Width safety guard III	2	60	Small axial bush	4
10	Long safety guard III	1	61	Roller	4
11	External scissor	1	62	Axial bush	2
12	Bushing	2	63	Middle roller	2
13	Nylon washer	2	64	Roller axle	2
14	Washer	2	65	Spring straight pin 4 \times 40	2
15	Spring washer 8	4	66	Screw M3 \times 10	8
16	Hex bolt M8 \times 20	4	67	Spring washer 3	4
17	Axial cover	2	68	Washer 3	4
18	Screw M5 \times 16	4	69	Control switch	1
19	Locknut M10	4	70	Hydraulic-pump unit base	1
20	Washer10	6	71	Control wire	1 set
21	Bushing	4	72	Plug	1 set
22	Hex bolt M10 \times 55	4	73	Electrical box	1
23	Middle axle	2	74	Washer 4	2
24	Spring	8	75	Spring washer 4	2
25	Buffer-board	8	76	Screw	2
26	Locknut M8	8	77	Pipe-joint	1
27	Nut M4	14	78	Seal ring 14	2
28	Safety switch	6	79	Hydraulic power pack	1
29	Fixed-board	12	80	Spring washer 10	2
30	Spring straight pin 4 \times 50	4	81	Screw M10 \times 20	2
31	Axle for wheel I	2	82	High pressure hose I	1
32	Bushing	4	83	Plug	1
33	Wheel	4	84	Socket	1
34	Internal scissor	1	85	Switch wire	1 set
35	Screw M6 \times 10	3	86	High pressure hose II	1
36	Eyebolt	3	87	Nylon seal	2
37	Axle for wheel II	2	88	Ball valve	1 set
38	Screw M5 \times 12	6	89	High pressure hose set	1
39	Washer5	2	90	O-ring $\phi 10 \times 1.8$	1
40	Switch	1	91	Joint pin	2
41	Mounted plate	1	92	Seal ring 12	4
42	Chassis	1	93	Joint bolt	2
43	Bush	2	94	Long tube assembly	1
44	Anti-explosive valve	2	95	T joint	1
45	Cylinder tube	2	96	Short tube assembly	1
46	Piston	2	97	Screw M6 \times 12	3
47	Snap Ring 25	2	98	Spring washer 6	3
48	Piston rod	2	99	Washer 6	3
49	Cylinder cover	2	100	Power-unit cover	1
50	O-ring $\phi 55 \times 2.65$	2	101	Plastic joint	1 set
51	Snap Ring 60	2	102	Rubber bush	1



LIFT TABLE SPARE PARTS LIST ELECTRIC BOX

NO.	DESCRIPTION	QTY	NO.	DESCRIPTION	QTY
1	Screw M5×20	6	11	Screw M5x16	1
2	Cover	1	12	Earthing	1
3	Screw M5x10	3	13	Nut M5	1
4	Spring washer 5	4	14	Nut M4	2
5	Washer 5	4	15	Washer 4	4
6	Integrated circuit board	1	16	Screw M4x10	2
7	Box	1	17	Plug for fuse	2
8	Plastic joint	3	18	Fuse 5A	2
9	Plastic joint	3	19	Contactactor	1
10	Plastic cover	1			